

Cel-Cro

PAT. PENDING

Low Profile Digital Mounting Solutions

The perfect smartphone, tablet, or GPS mounting device for cars, trucks, boats, motorcycles, and even your home!



▶ CONTOURS FOR UNLIMITED SOLUTIONS

▶ DURABLE WEATHER RESISTANT ADHESIVE

▶ SECURE, LEGAL, AND CUSTOMIZABLE

Cel-Cro is a quick, easy-to-use, hands-free, and affordable smartphone, tablet, or GPS legal mounting solution for cars, trucks, boats, motorcycles and even in your home. Cel-Cro's "quick-mount" low profile technology contours and secures your electronic device to an unlimited variety of surfaces including automotive dashboards, consoles, visors, and steering wheels¹. For in-home solutions, Cel-Cro can be used on kitchen and bathroom cabinets, refrigerators, walls, mirrors, doors, and more!

- Cel-Cro is the #1 legal solution to secure your GPS or smartphone device to your vehicle while ensuring a non-distracted clear view of the road ahead!
- No more smartphone "lap-slides", "dash-slips", or "seat-wedging" while driving!
- No measuring or cutting with 6 perfectly precut low profile shapes to choose from!
- Hands-free cooking in the kitchen with eye level placement that protects your device from spills!

▶ GREAT FOR IN-HOME USE! Browse recipes, read the news, and video chat with friends!



Cel-Cro RETAIL PRICE:

~~\$6.95~~ ea.

NOW ONLY
\$4.95 ea.

*Limited time offer while supplies last!

Wholesale & Distributors Call For Pricing.

ORDER CEL-CRO TODAY!

"Always know where your digital device is with Cel-Cro!"

Call: 619.684.1181

www.celcro.com

Email: sales@celcro.com

Technical Specifications

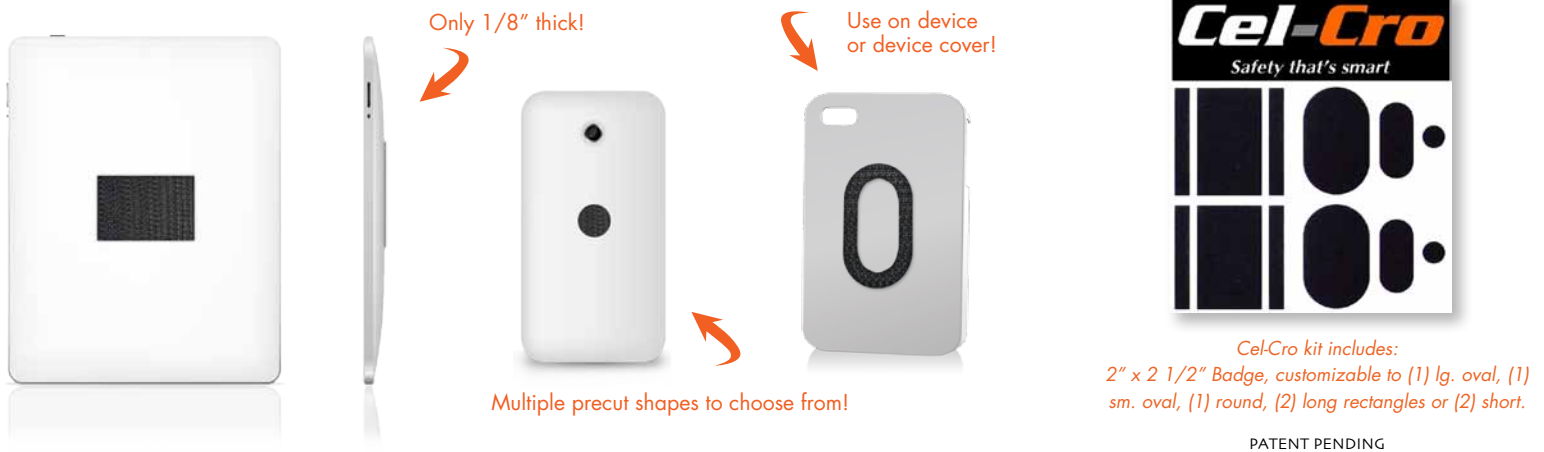
Quick secure placement for your smartphone, tablet or GPS device is simple with Cel-Cro!

CEL-CRO SOLUTIONS:

Cel-Cro's safe-to-use, low profile, patent-pending, digital mounting application is a secure and effortless "quick-mount" technology solution for smartphones, GPS, or tablet devices and is compatible with almost any shape or size. Cel-Cro's extremely durable, high-resilience, water resistant adhesive can mount on most surfaces such as dashboards (for maximum visibility), stainless steel, tile, plastic, vinyl, wood, and more. Simply set your device over the Cel-Cro surface and instantly secure it in place with an amazingly fast snap on / snap off one-handed operation.

CEL-CRO BONUS FEATURES:

- ★ Cel-Cro is 2x's more powerful than other mounting solutions and safely secures your digital device on most surfaces that other mounts and suction cups fail on.
- ★ Cel-Cro is cradle-less and free of ugly brackets so your device is entirely free of any limitations or obstructions that ordinary mounts give.
- ★ Cel-Cro allows you to position your device at the perfect angle and quickly change from portrait to landscape viewing in seconds.
- ★ Cel-Cro eliminates the sliding, dropping and seat wedging of loose devices... Say goodbye to the "dash-slide", "lap-slip" and "seat-wedge" burdens!
- ★ Cel-Cro allows you to fully customize your mounting solution by placing one or more of the 6 precut Cel-Cro shapes wherever you decide on your device or device cover.



CEL-CRO PRODUCT SPECIFICATIONS:

"Quick-mount" industrial semi-permanent technology is built for durability, heavy duty usage, and is 100% safe for use with all smartphone, GPS, and tablet devices.

Patent-pending design, combined with high-resilience hook and loop materials from Velcro USA, is more secure and less obtrusive technology than conventional mounting devices.

Customize the back of your cell phone, smartphone, GPS, or tablet and place your digital device virtually anywhere at home or in your vehicle.

Install and attach on surfaces like dashboards and consoles as well as on substrates such as wood, vinyl, plastic, or leather – along with nonporous surfaces such as ceramic, glass, and bathroom or kitchen tiles*.

Cel-Cro PAT. PENDING

Low Profile Digital Mounting Solutions

*Cel-Cro does not recommend mounting devices on steering wheels of vehicles that have airbags or while charging and does not recommend texting while driving in any situation.

*Cel-Cro uses only original Velcro brand products and should be checked for adequate adhesion prior to use. Please practice safety first and be conscious of the laws in your state.

For optimum performance clean surfaces with isopropyl alcohol before applying Cel-Cro.
For optimum security use the rectangle or large Cel-Cro oval badge with tablets or large devices.

HOW TO INSTALL CEL-CRO:

Select your Cel-Cro design. Slightly bend your Cel-Cro at the edge of your selected design to remove your selected pieces from backing. **Gently** line up your Cel-Cro solution and **lightly** affix to your desired placement in your car or home as needed for optimum performance. Remove coinciding Cel-Cro piece and **lightly** affix to your already placed Cel-Cro piece leaving adhesive side open and available to secure to your device. Place device gently onto adhesive. Slowly pull Cel-Cro apart leaving one customized solution in your home or your vehicle and the other on your digital device and press firmly to secure. You are now safe, legal and ready to enjoy your Cel-Cro mounting solution. Allow 24 hours for adhesive to set for optimum performance.

ORDER CEL-CRO TODAY!

Call: 619.684.1181

www.celcro.com

Email: sales@celcro.com